



Spring is here!

Natorp's

NURSERY OUTLET

Gates Open March 31st

Wednesdays - Sundays 10am - 5pm

www.natorp.com

Let's Garden!

Gates Open March 31st
Wednesdays - Sundays 10am - 5pm



01

Visit the Outlet

Natorp's Outlet will be open to the public Wednesdays through Sundays 10am-5pm.

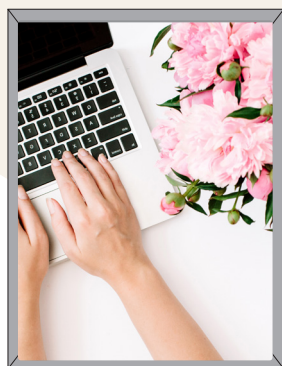
We will continue to observe the latest COVID Safety Rules and Regulations.

02

Buy Online with Curbside Pickup

It's Easy! Purchase your plants online and you will receive an email when your order is ready for pick up at the nursery.

WWW.NATORP.COM



Garden Questions?

Email our Experts:
questions@natorp.com

Early Edibles!

Time to plant those delicious cool weather-loving edibles!

1



Sweet Strawberries!
Early Glow, All Star
Eversweet, or Delizz

2



Grow your Vitamin C!
Plant Broccoli,
Brussel Sprouts
& Cabbage.

3



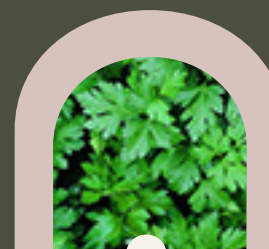
Get Your Leafy Greens!
Collard, Mustards
& Swiss Chard

4



Plant Chives!
They look great in
the garden and on
your plate!

5



Make it Mediterrean!
Italian Parsley,
Greek Oregano &
Slow Bolting Cilantro

6



Culinary Classics!
Dill, Rosemary,
and Thyme!



SHOWSTOPPING SWEETBAY

Multi-Stem Magnolia

A showstopper that from spring to summer brings creamy white blooms and an exquisite lemon-like fragrance! It is a small tree that is a perfect choice as an accent in your beds and foundation plantings.

[Find more Showstoppers!](#)

Look at Us! SHOWSTOPPERS



BLOODGOOD

Japanese Maple

Go Bold! Bloodgood is the perfect tree to bring bold color and interest to smaller gardens.



PERKIN'S PINK

Yellowwood

A flowering shade tree! Enjoy lovely fragrant blooms and beautiful yellow fall foliage.



PURPLE ROBE

Black Locust

Experience an incredible spring flower show of violet pea-like flowers with this medium-sized, oval-shaped tree.

Spring Blooming PERENNIALS



Sun Loving **Dianthus**

Dianthus are creeping groundcovers in shades of pink, lavender, and red.



Long Blooming **Hardy Geranium**

One of the longest blooming perennials for the garden and a low maintenance favorite!

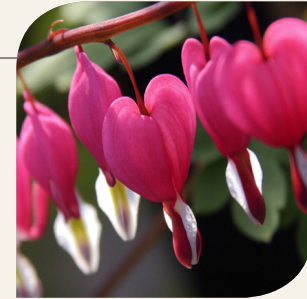


Reblooming **Iris**

Plant reblooming varieties like Jurassic Park, Best Bet, or Hemstitch, for an elegant specimen plant and cut flowers.

Early Blooming **Dicentra**

Also known as Bleeding Heart, you will fall in love with the heart-shaped flowers.



Low Growing **Phlox**

Add a colorful carpet of flowers to your spring landscape with an array of available colors.

Evergreen **Candytufts**

Enjoy the fragrant blossoms and compact foliage that makes an excellent choice for the front of a border.





Diversity of Dogwoods

THINK PINK

Pink, Stellar Pink,
and Cherokee Brave
are perfect pink
accent trees!



WONDERS IN WHITE

Cherokee Princess White,
Milky Way, and Cloud Nine
bring crisp and classic white
blooms to your landscape!



SENSATIONAL SHRUBS

Bring Dogwood style on a
smaller scale with
Ivory Halo, Pucker Up,
Red Twig or Yellow Twig.



Dreamy Dogwoods!

What a difference a Dogwood
makes with showy blooms and
excellent fall foliage.
A forever favorite!

Shop *Dogwoods!*

Six Awesome ACCENT TREES!

“The first blooms of spring
always makes
my heart sing.”
S. Brown



Forest Pansy
Redbud

Early Spring
Color, Brilliant
Fall Foliage,
Year-Round
Interest

*Likes Sun to
Part Shade*



Thundercloud
Plum

Outstanding
Purple Foliage,
Beautiful Spring
Blooms, and
Fast Growing

Likes Sun



Royal Raindrops
Crabapple

Great for small
gardens!
Deep Purple
Foliage, Showy
Spring Flowers

Likes Sun



Snow Fountains
Cherry

Wonderful
Weeper!
Fragrant Blooms,
Fabulous Fall
Color

Likes Sun



Ruby Tears
Crabapple

A Weeping
Crabapple!
Great Blooms,
Perfect for
Small Spaces

Likes Sun



Autumn Brilliance
Serviceberry

Four Season
Interest, Red
and Orange Fall
Color, and Fruits
in June

*Likes Sun to
Part Shade*

ALSO, FAVORITES FOR FOLIAGE!

[Shop Over 200 Kind of Trees!](#)



Karens Azalea

Karens brings a spectacular display of lavender-pink blooms and evergreen foliage that turns a coppery hue in fall and winter. A stunning addition to shady beds, borders, and woodland gardens. Enjoys Part Shade to Shade.

Hino Crimson

A compact shrub that brings an explosion of crimson-red blooms!



Three Great RHODODENDRON



1

Love For Lavender Boursault

Add lovely lavender to your garden with this hardy rhododendron with a tight growth habit and good branching that makes it attractive throughout the year.



2

Beautiful Blooms Lee's Purple

Bring striking early spring blooms to the shady parts of your garden with this hardy, evergreen shrub. A dappled shade lover, it is the perfect accent for beds and woodland gardens.



3

A Wonder in White Chionoides

With its large white blooms and glossy green leaves, Chionoides is a beautiful accent or border shrub. An evergreen with a dense growth habit that looks great all year.

Growing Tips: Grow in morning sun, afternoon shade or shade. It prefers well-drained, evenly moist soil (organically rich- acidic). Mulch to help with even moisture and temperature fluctuations.

[Shop Rhododendrons!](#)

Wine and Roses Weigela



Introduce Wine and Roses to your garden as an accent plant or mass planting and bring rosy-pink flowers that rebloom into summer. It is a low maintenance spring favorite!

See the *Weigela* Collection!

Perennial Winners OF THE YEAR

CALAMINT

2021 PERRENIAL OF THE YEAR

It's aromatic, deer-resistant, and brings terrific tiny, white flowers from summer to fall. This full-sun lover is undemanding and low mounting, making it perfect for the front of borders, rock gardens, and more. And pollinator friendly!



Sun Loving

RAINBOWS END HOSTA

2021 HOSTA OF THE YEAR

Are you looking to brighten a dark area in your garden? Meet Rainbows End! A low maintenance hosta with bright variegated foliage and late summer lavender flowers. A perfect choice as an accent for borders, beds, and woodland gardens.



Shade



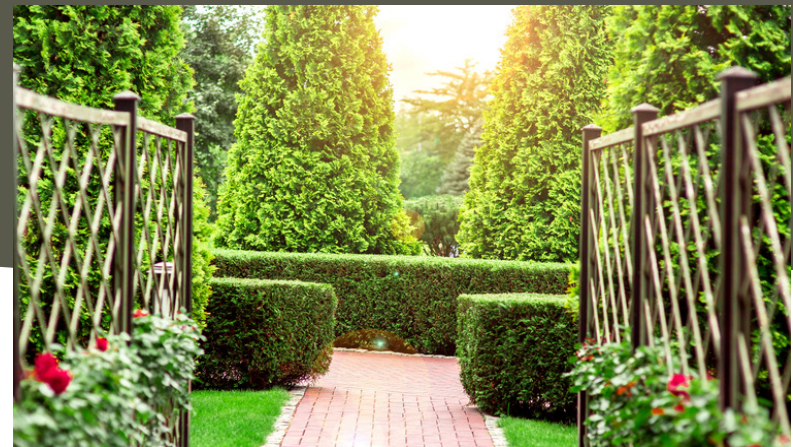
Landscape Solutions

Lush Landscape

Create a lush look in your beds and borders by layering your plants. It's simple! Plant the tallest in the back, medium in the middle, and shortest in front.

Featuring:

- 1) Limelight® Panicle Hydrangea
- 2) Fine Line® Buckthorn
- 3) Vista Red Salvia
- 4) Black Cherry Supertunium
- 5) Goldilocks Rocks Bident
- 6) Silver Falls Dichondra



Heavenly Hedge!

With so many evergreen sizes and shades, you can create the perfect hedge for your size garden.

CREATE A LOW HEDGE



Mr. Bowling Ball
Arborvitae



Gray Owl
Juniper



Gold Lace
Juniper

CREATE A TALL HEDGE



Polar Gold
Arborvitae



Star Power Upright
Juniper



Emerald Green
Arborvitae



Fabulous Foundation

Every beautiful garden
begins with a
fabulous foundation!

Four Season Foundation

Give your landscape interest and color throughout
the year with these foundation favorites!

1



Whitespire
Birch

2



Crimson Sentry
Maple

3



Cascade Falls
Weeping Cypress

4



Soft Serve
Gold Falsecypress

5



Fire Chief
Arborvitae

6



Summer Wine
Ninebark



Summersweet

The perfect compact shrub! Introducing a sun or shade lover, Summersweet brings a wonderfully scented summer flower and lustrous deep green foliage that turns a pale yellow in fall. It is easy to grow and perfect for mixed perennial and shrub borders. And deer resistant!

Ruby Spice

It is prized for its late-blooming pink flowers, deep green foliage, and adaptability to shade and wet conditions. [SHOP NOW!](#)



8 Low Maintenance NATIVES



Kobold Liatris



Mardi Gras
Sneezeweed



Giant
Coneflower



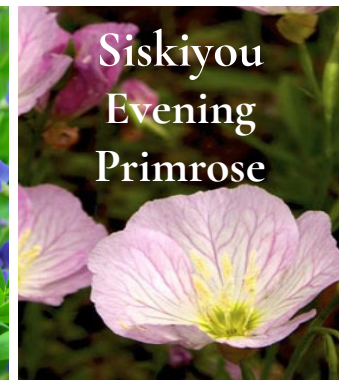
Butterfly Weed



Bee Balm



False Indigo



Siskiyou
Evening
Primrose



Husker Red
Penstemon

Sweets for the Garden

PLANT FRUITY FAVORITES!

From the sweetness of the Bing to the tart Montmorency, find the perfect cherries for your garden. And, don't forget the delicious apple trees!



MAKE YOUR GARDEN BERRYLICIOUS!

A delicious garden would not be complete without berries. Find the most extensive collection of raspberries, blueberries, and more!



Find more great Fruits & Berries [Click Here!](#)



See You March 31

Visit Wednesdays-Sunday
10am - 5pm
8601 Snider Rd. Mason, OH
www.natorp.com

Welcome Back!

Natorp's
NURSERY OUTLET